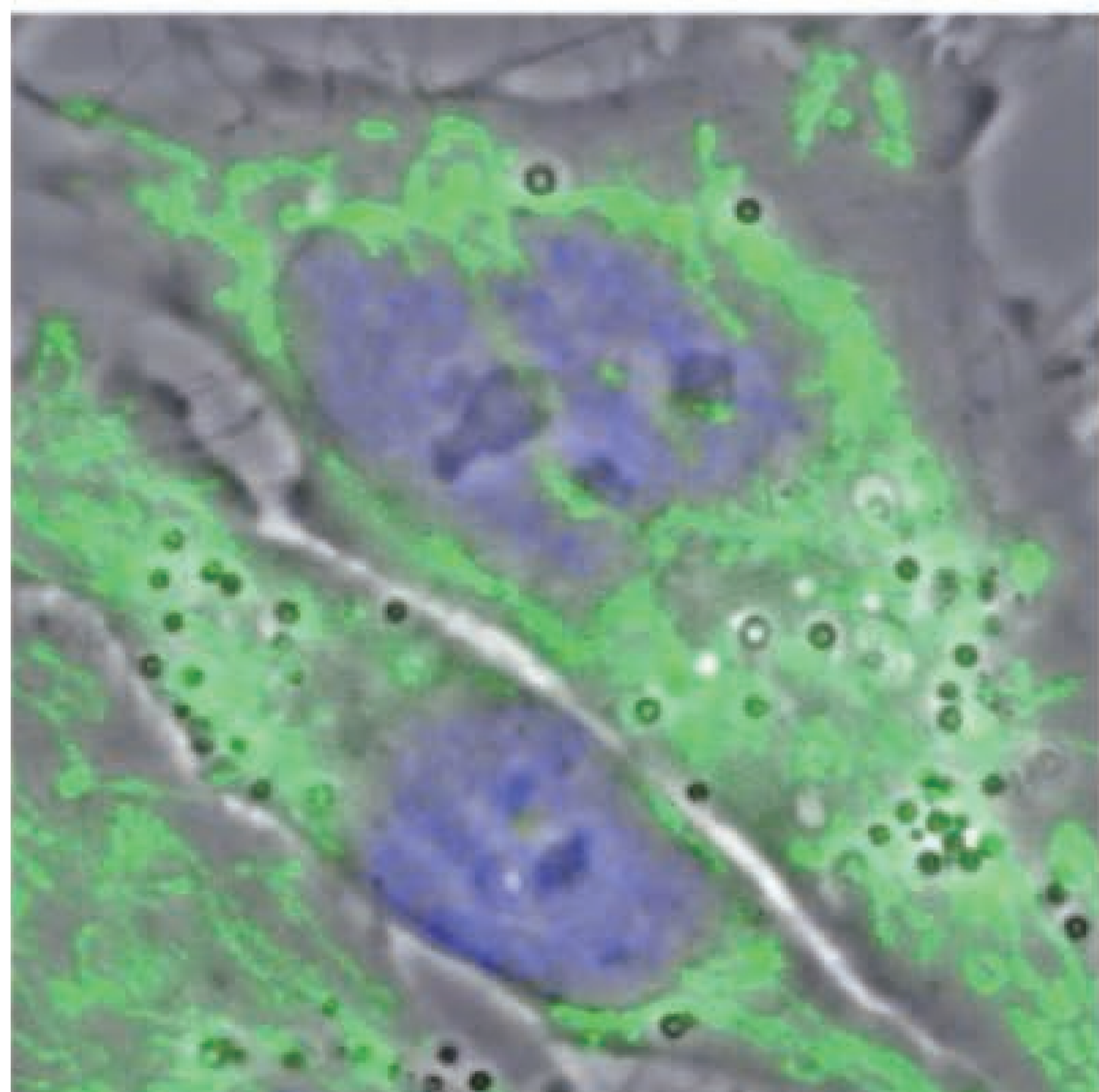


The addition of 5% SUPER SOPHIA/
SUPER SOPHIA MILD solution achieved
the reduction of mitochondrial
dysfunction.

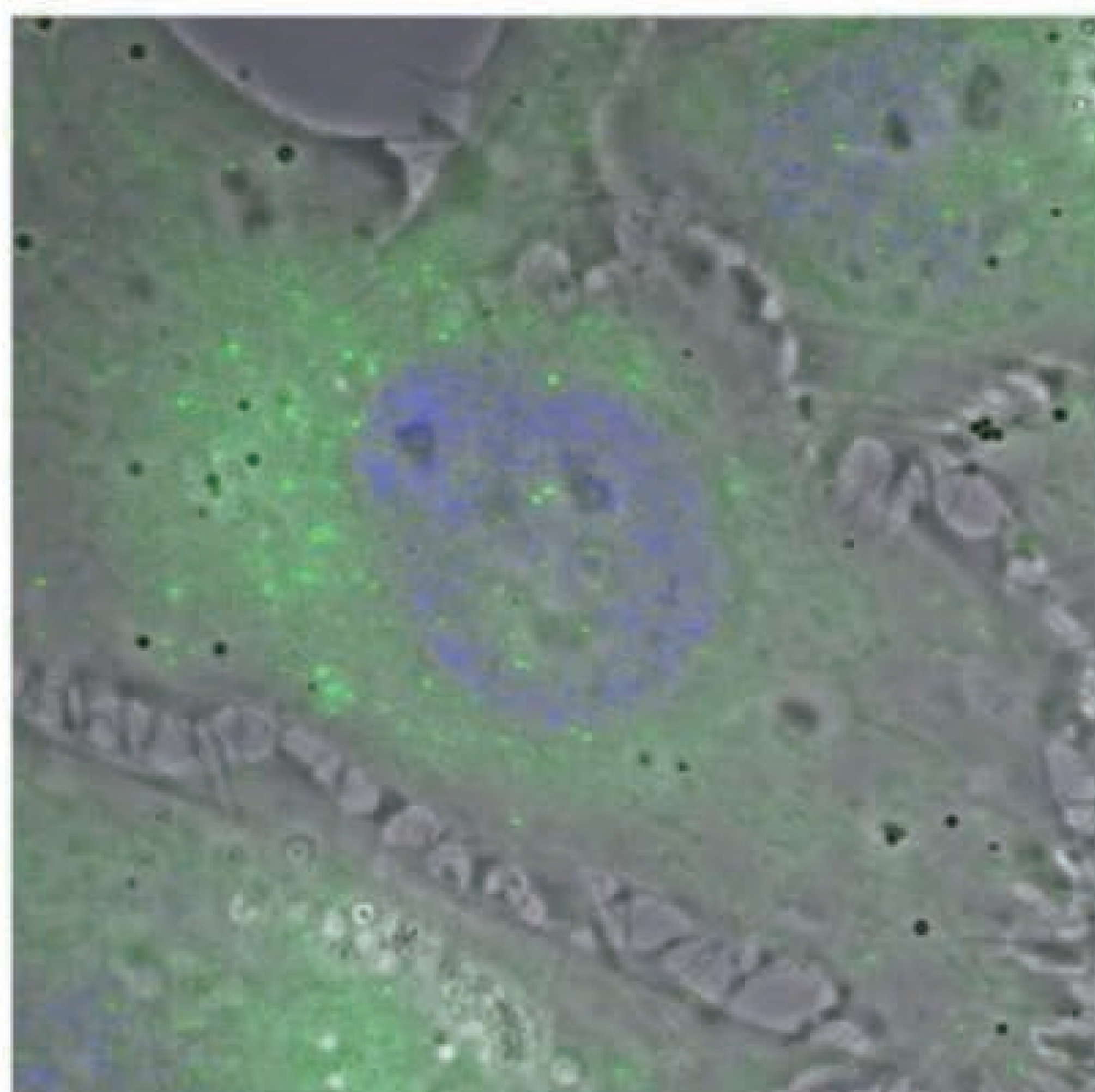
1

Mitochondrion
in normal state



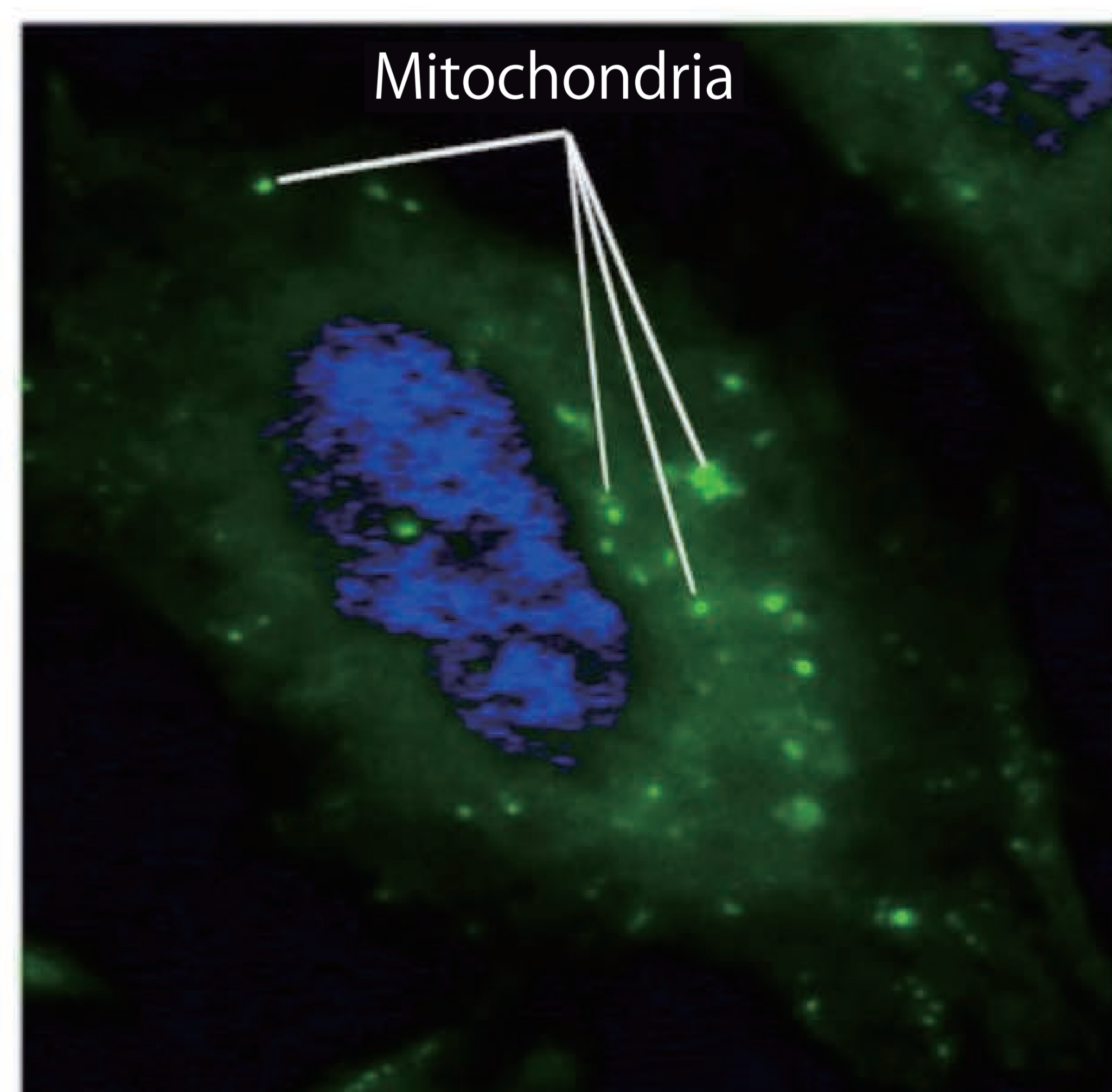
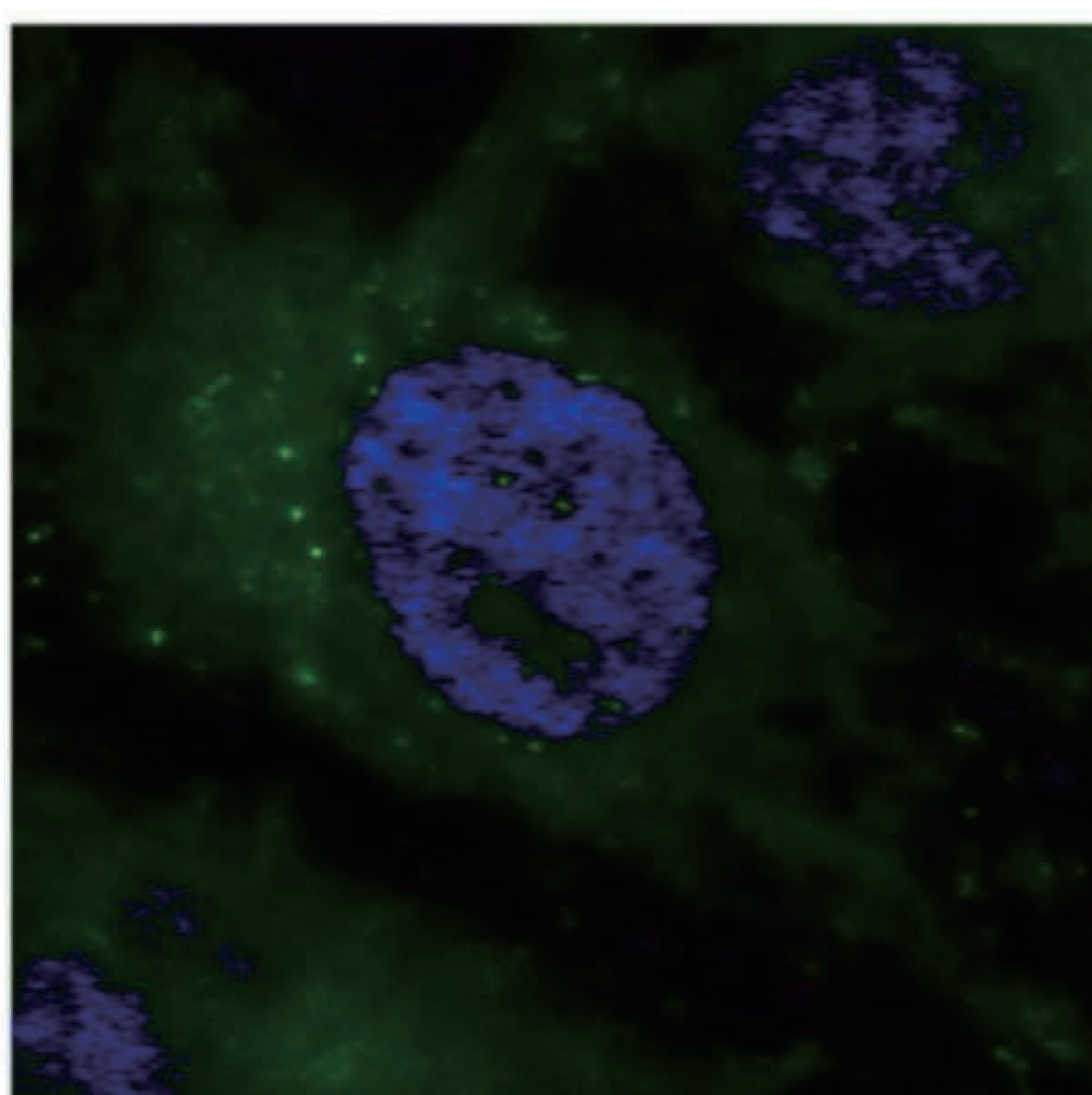
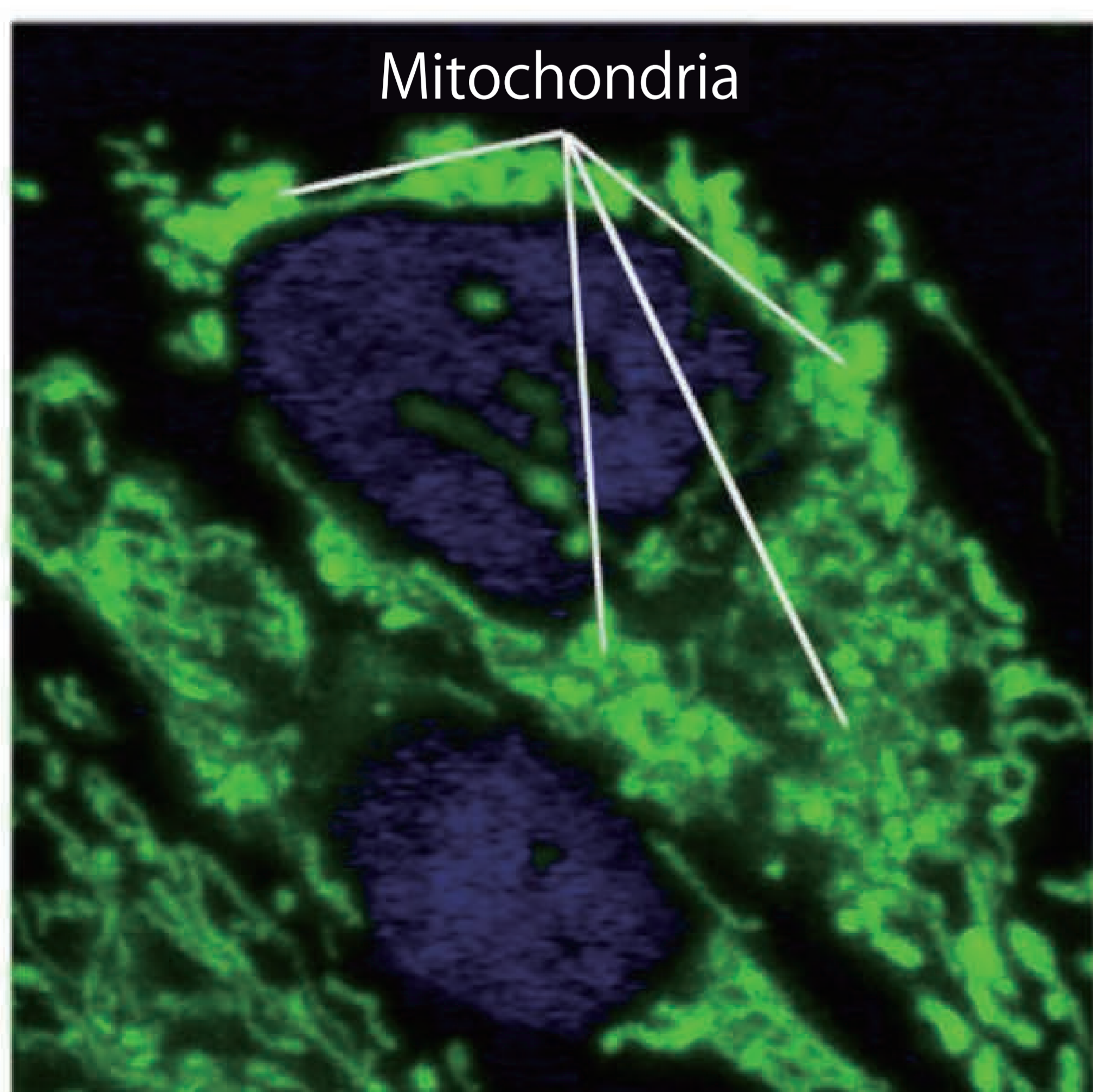
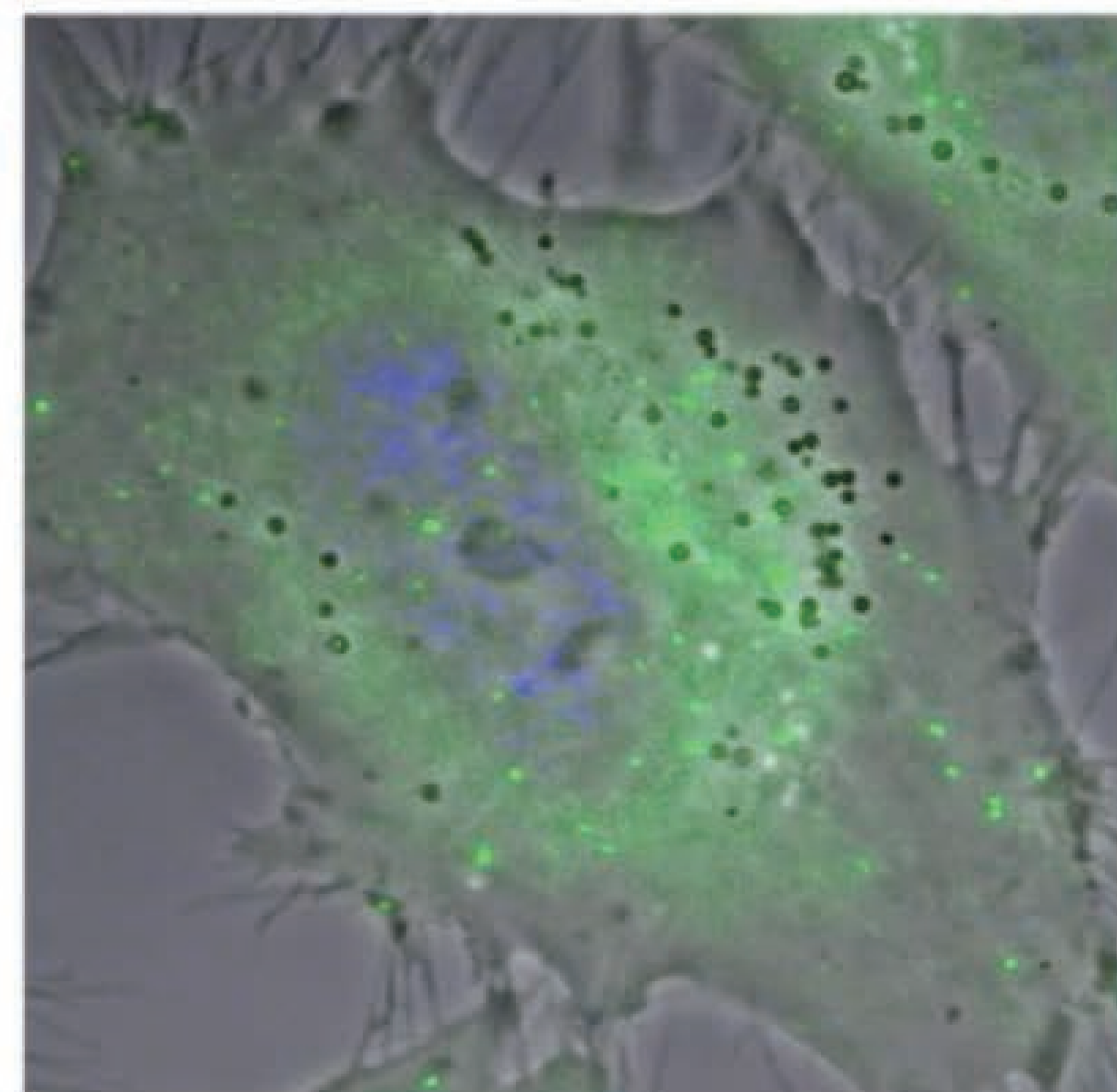
2

Inhibited Mitochondrion



3

Mitochondrion with 5%
diluted solution of
SUPER SOPHIA/
SUPER SOPHIA MILD



SOPHIA Co., Ltd. in collaboration with Timelapse Vision, Inc.
added SUPER SOPHIA/SUPER SOPHIA MILD solution at a 5% concentration to
human-derived cells in which mitochondrial function was inhibited by FCCP.* We observed
changes in mitochondrial membrane potential, and confirmed
that SUPER SOPHIA/SUPER SOPHIA MILD reduced the mitochondrial dysfunction.

*FCCP is a mitochondrial dysfunction agent that inhibits proton pump activity
and ATP synthesis reactions formed by the electron transfer system in mitochondria.