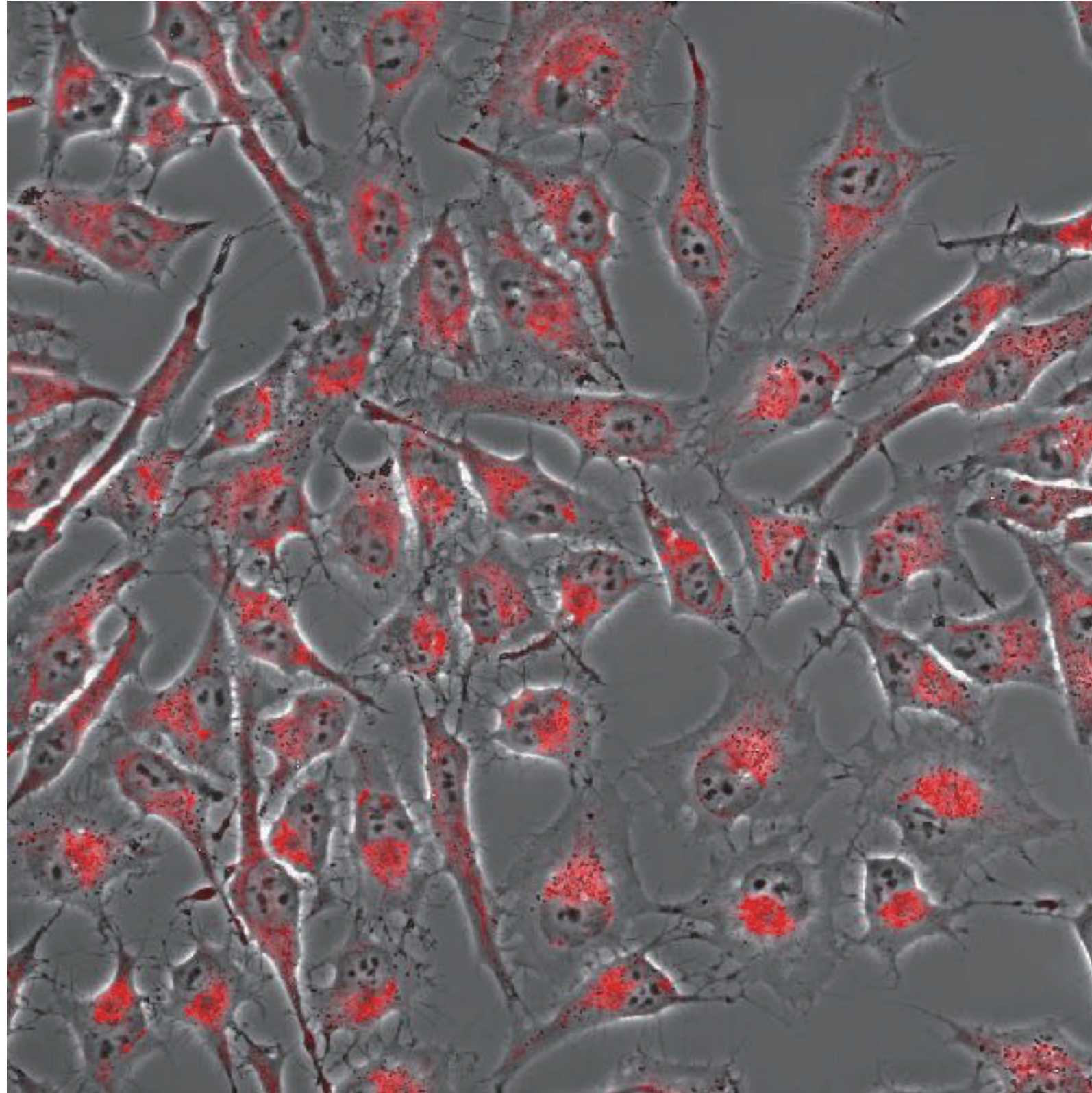


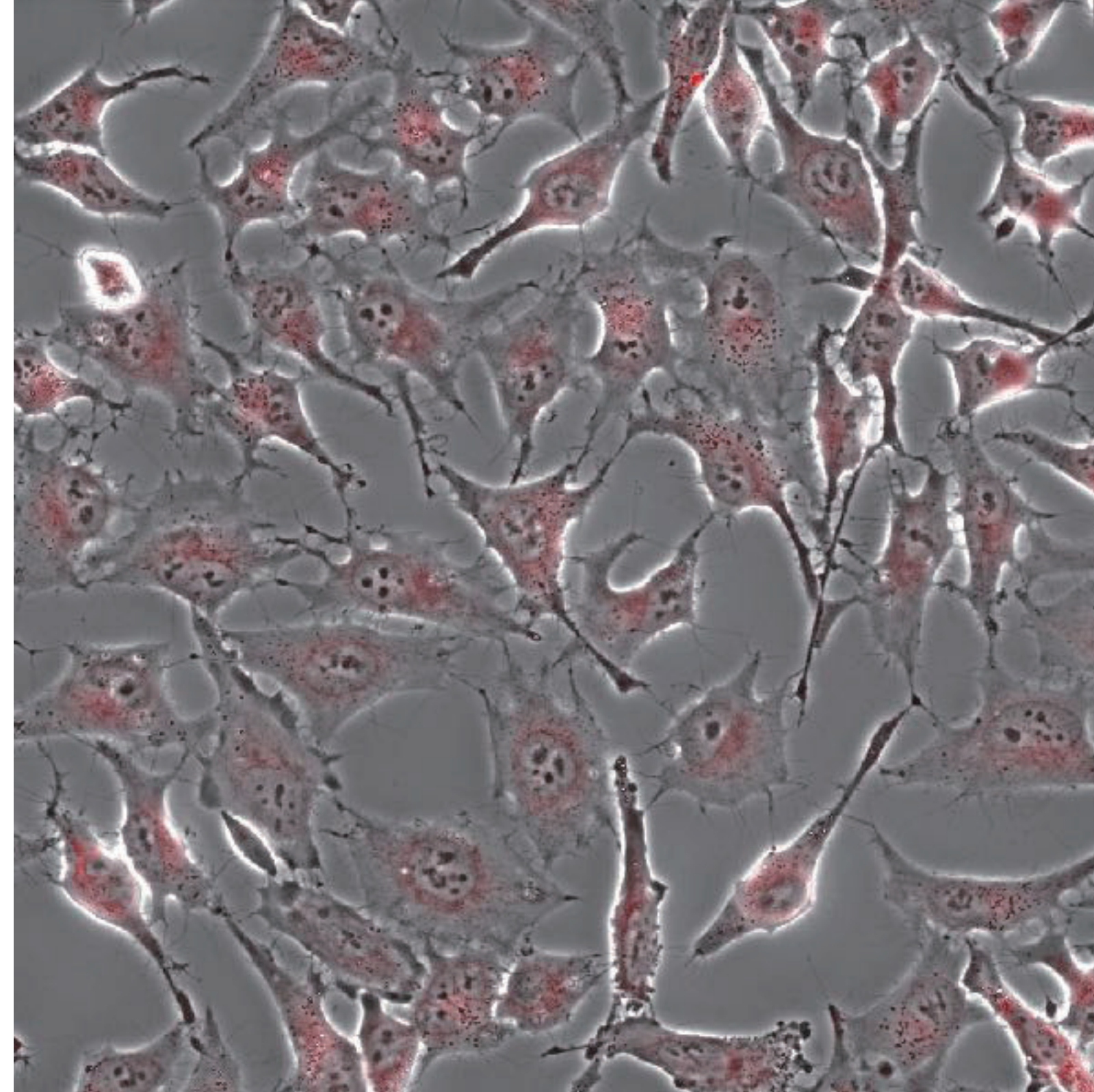
Mitochondrial Activity Experiment

Merging phase-contrast microscope images and fluorescence-stained images

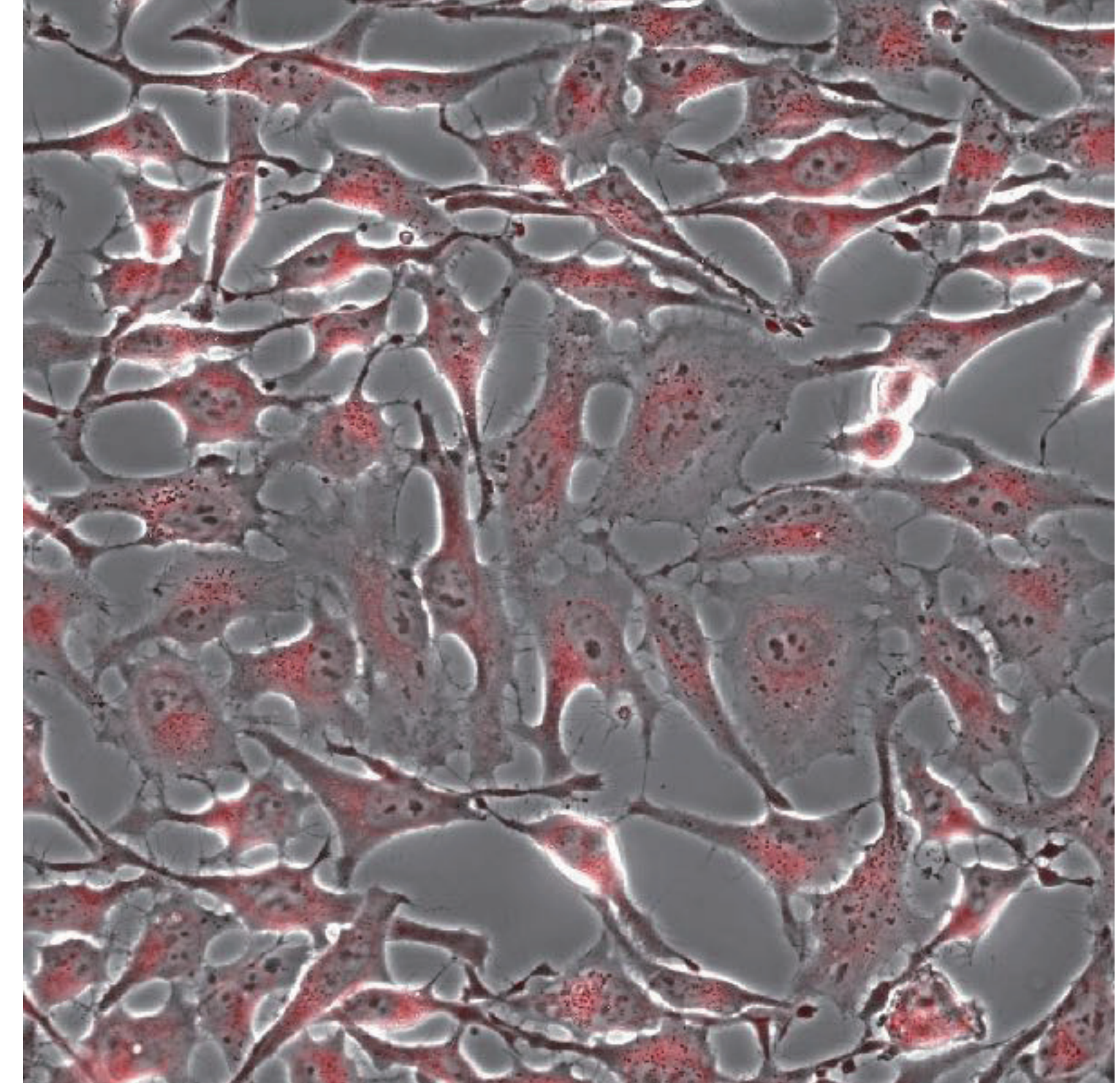
① Normal cells



② Cells with Mitochondrial damage



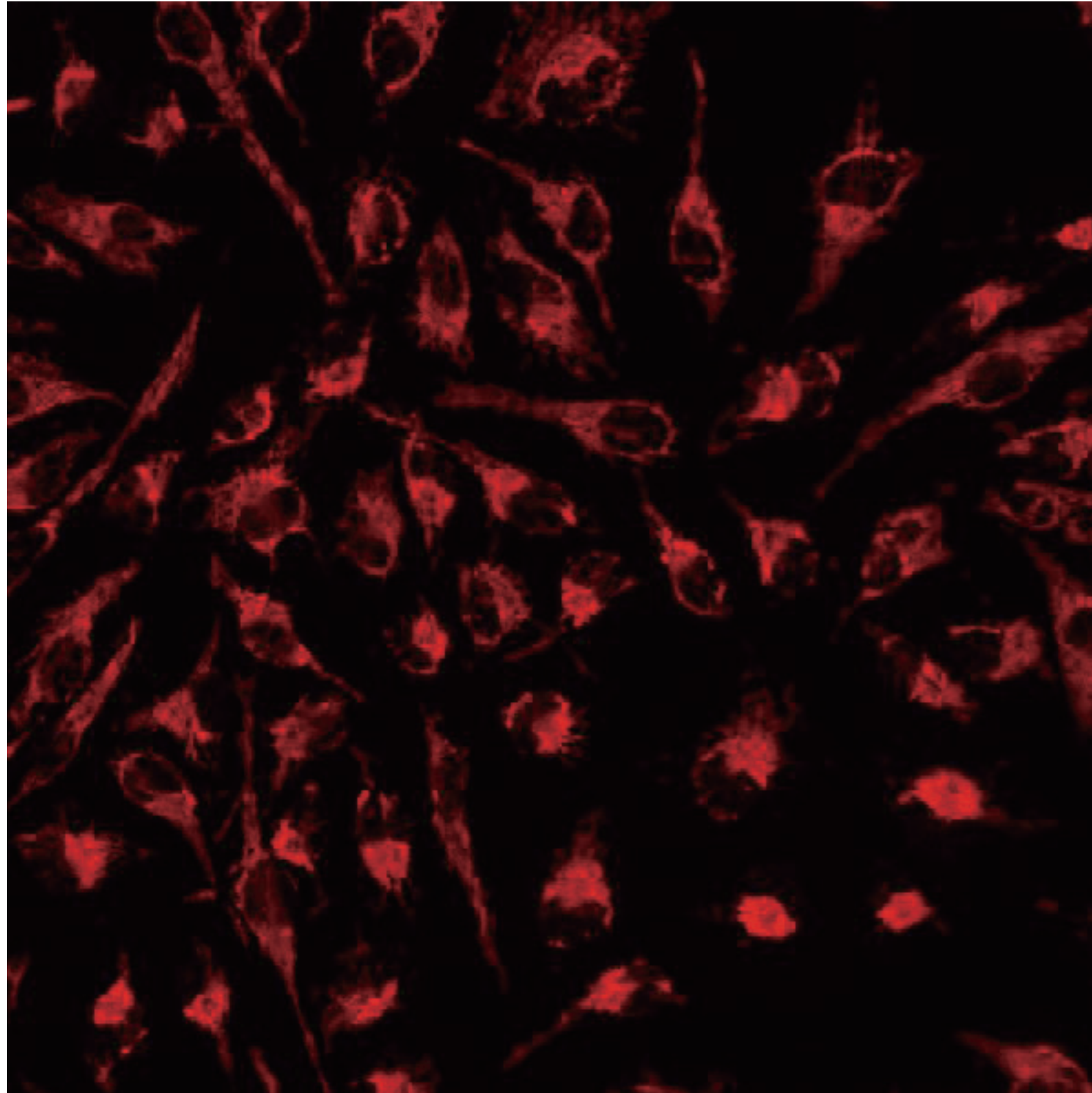
③ Cells with Mitochondrial damage
+
5% SUPER SOPHIA



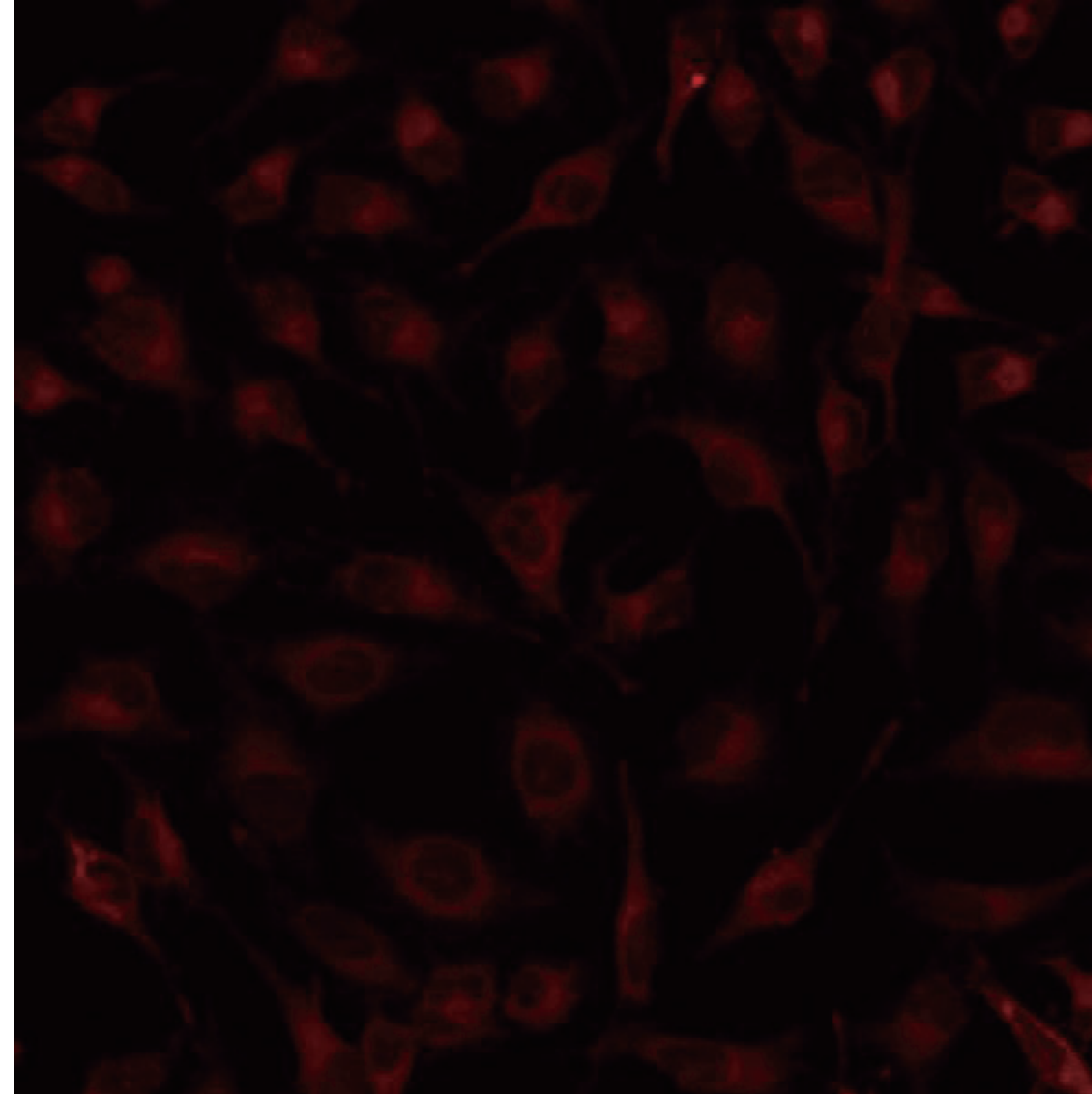
Strong red : normal
Pale red : damaged

Fluorescence-stained images

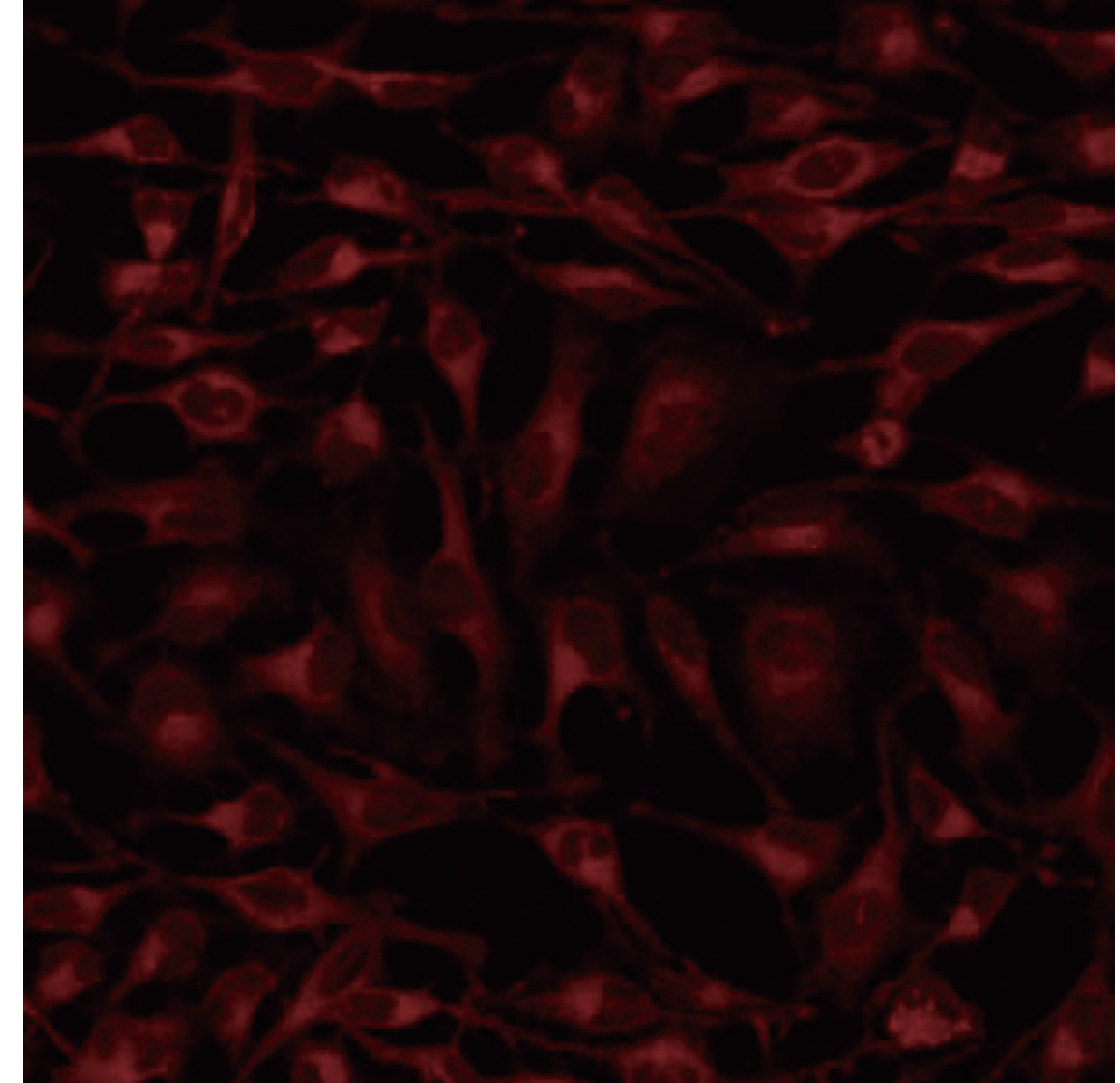
① Normal cells



② Cells with Mitochondrial damage



③ Cells with Mitochondrial damage
+
5% SUPER SOPHIA

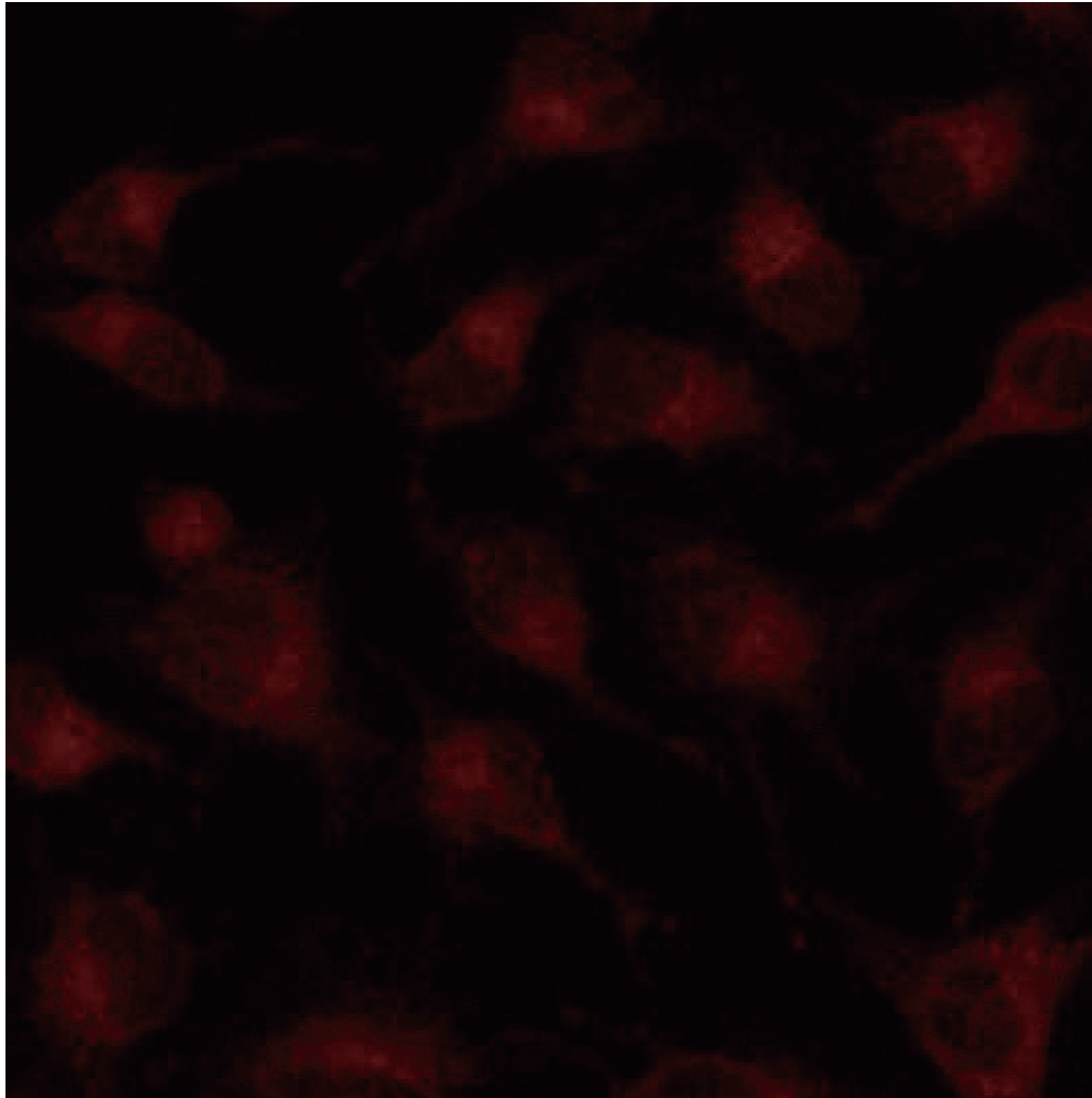


Strong red : normal
Pale red : damaged

Because this image ③ is stronger in red fluorescence than image ②, **SUPER SOPHIA** reduced mitochondrial damage.

Fluorescence-stained images (Partially enlarged image)

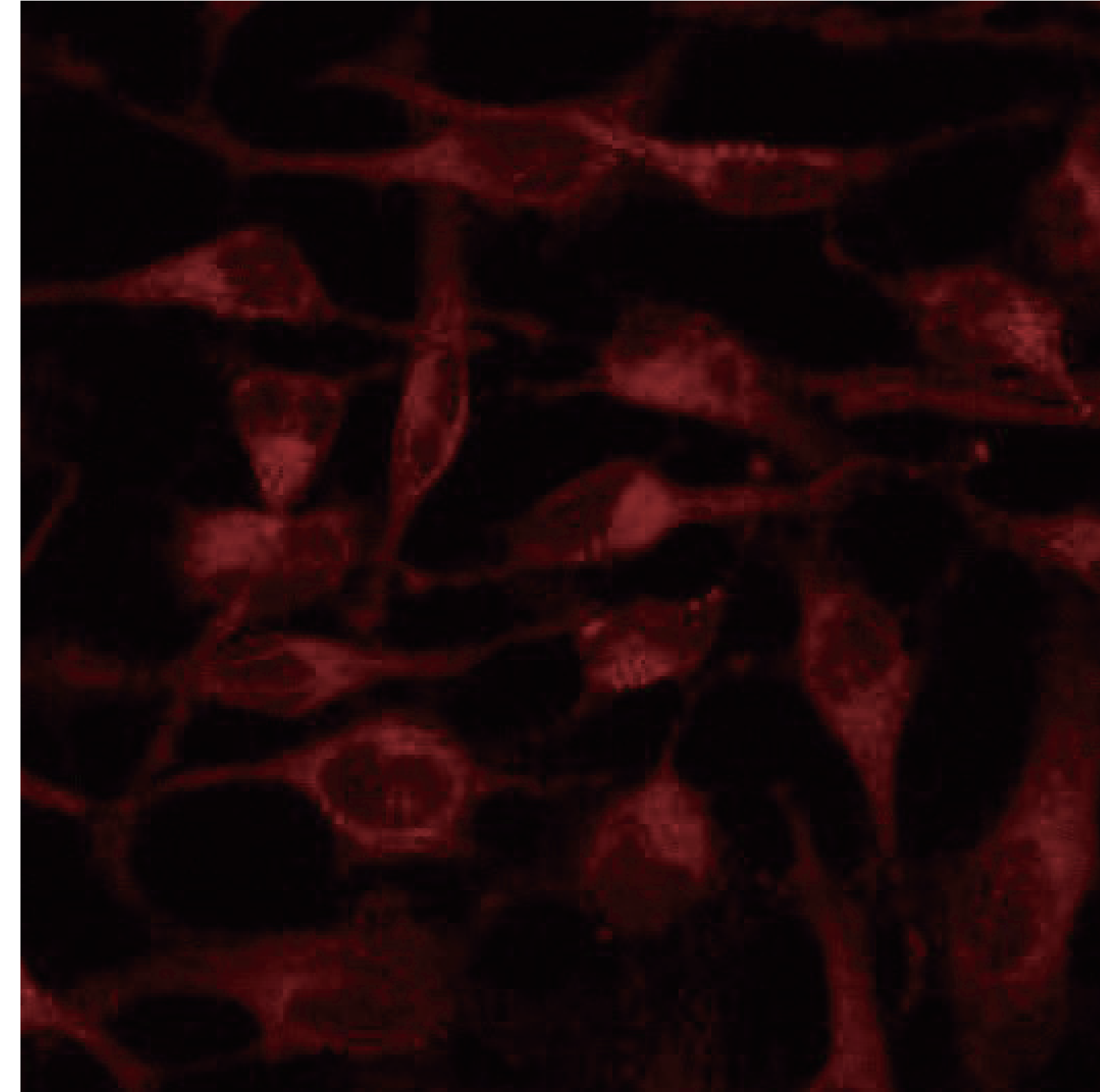
② Cells with Mitochondrial damage



Strong red : normal

Pale red : damaged

③ Cells with Mitochondrial damage
+
5% SUPER SOPHIA



Because this image ③ is stronger in red
fluorescence than image ②,
SUPER SOPHIA reduced
mitochondrial damage.